

Plan-Nr. Projektierung  
**G-001 Situation**

Bauherrschaft: **LDH** LDH Real Estate AG  
CH-8580 Amriswil

Planung: **METHABAU**  
entwickelt | plant | baut

METHABAU Plan AG  
CH-8580 Amriswil  
methabau.ch

Vernehmung: **ContractLogistics24**  
für vollqualifizierende Personalvermittlung und  
Neupositionierung von Logistik- / Gewerbetreibenden

ContractLogistics24 AG  
CH-8807 Freienbach  
contractlogistics24.com

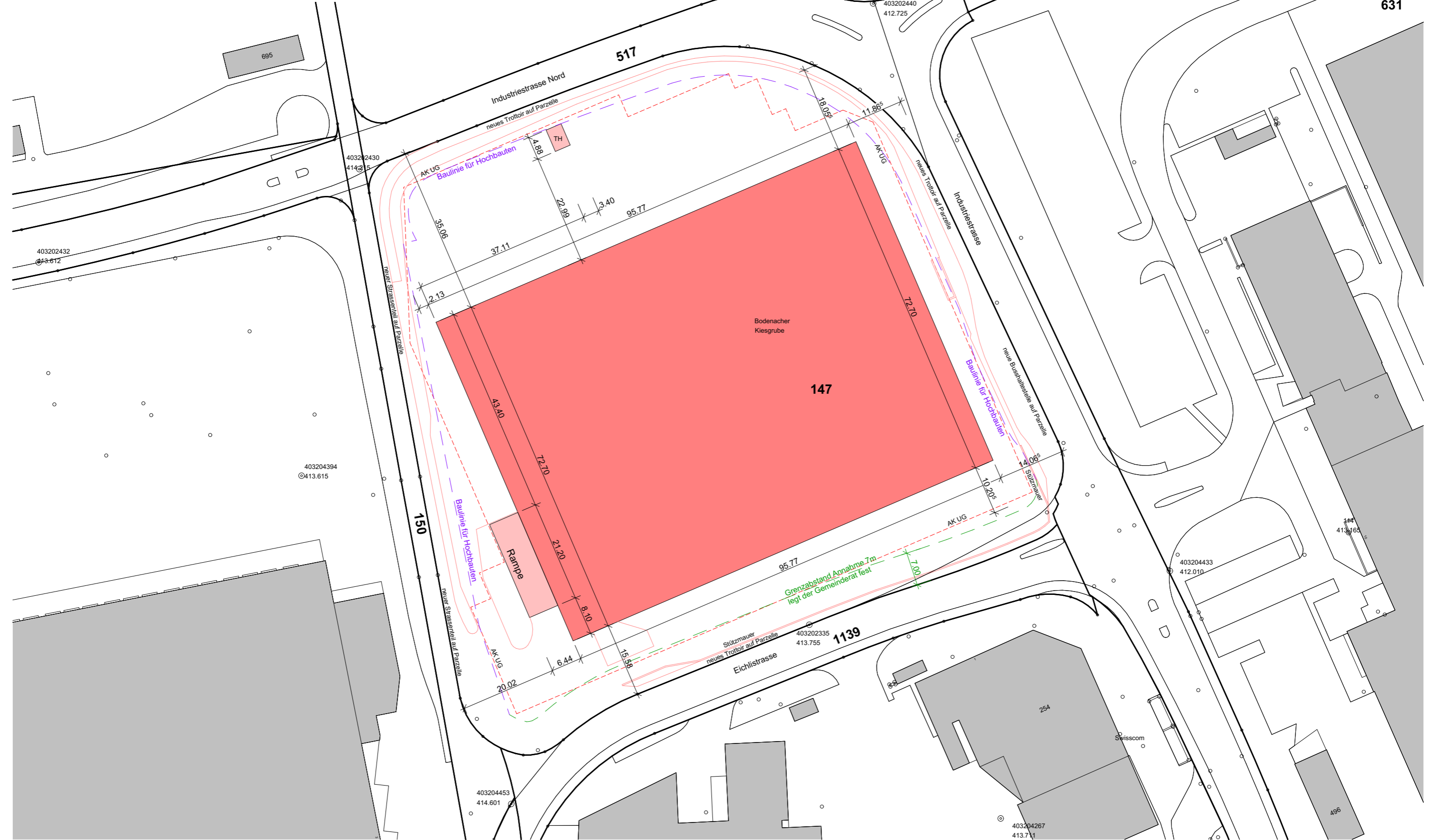


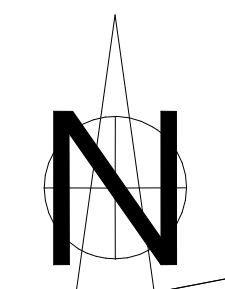
Projektentwicklung Phase: Studie Bau-Nr. 1000182

LDH Mägenwil  
Industriestrasse, 5506 Mägenwil

Format: A3 Datum: 21.06.2021  
Masstab: 1:750 Gez: CGU/DIT  
±0.00 = 414.15 m.ü.M Revidiert: 04.10.2024

Sämtliche Rechte inkl. Urheberrechte an diesem Plan verbleiben bei der METHABAU Plan AG. Ohne schriftliche Zustimmung darf der Plan weder kopiert, vervielfältigt, noch Dritten  
übergeben oder zugänglich gemacht werden.





783



**Legende**

- Grünfläche
- Asphalt
- Strasse auf Parzelle gem. Erschliessungsplan "Bodenacher"
- Gehweg auf Parzelle gem. Erschliessungsplan "Bodenacher"
- Strassen gem. Erschliessungsplan "Bodenacher"

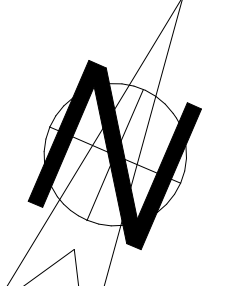
**Laderampen**

	Nord	Süd
UG LW	23	21
EG LKW	8	9
EG Solo-LKW	2	3
<b>Total Rampen</b>	<b>33</b>	<b>33</b>

**Parkplätze**

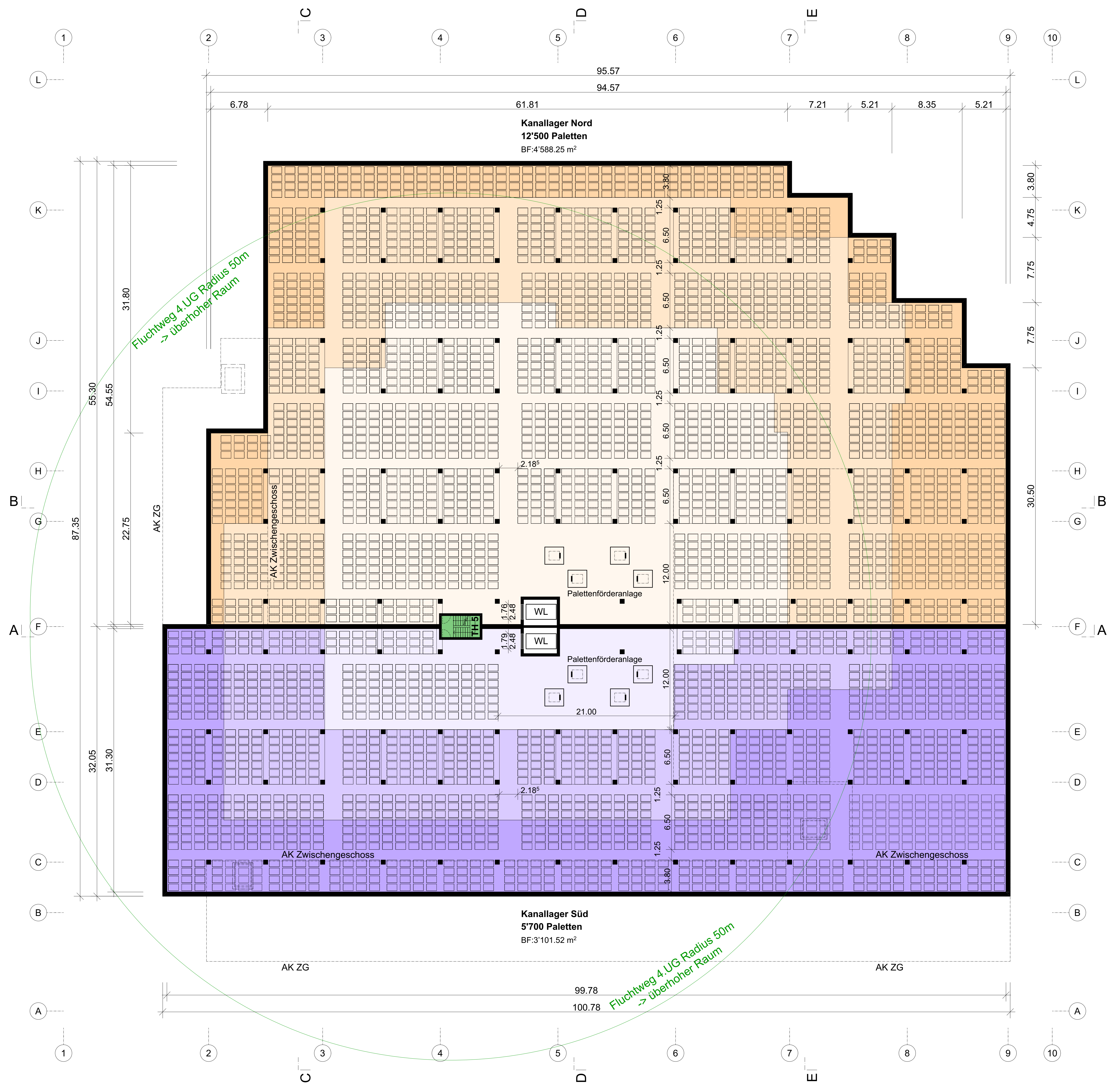
Tiefgarage ZG  
 PP Nord Mitarbeiter 57 (davon 2IV)  
 PP Süd Mitarbeiter 58 (davon 1IV)

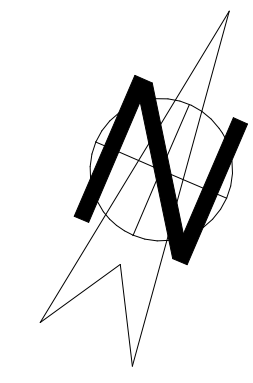
Umgebung EG  
 PP Besucher 10 (davon 2IV)  
**Total PW 124 (davon 5IV)**



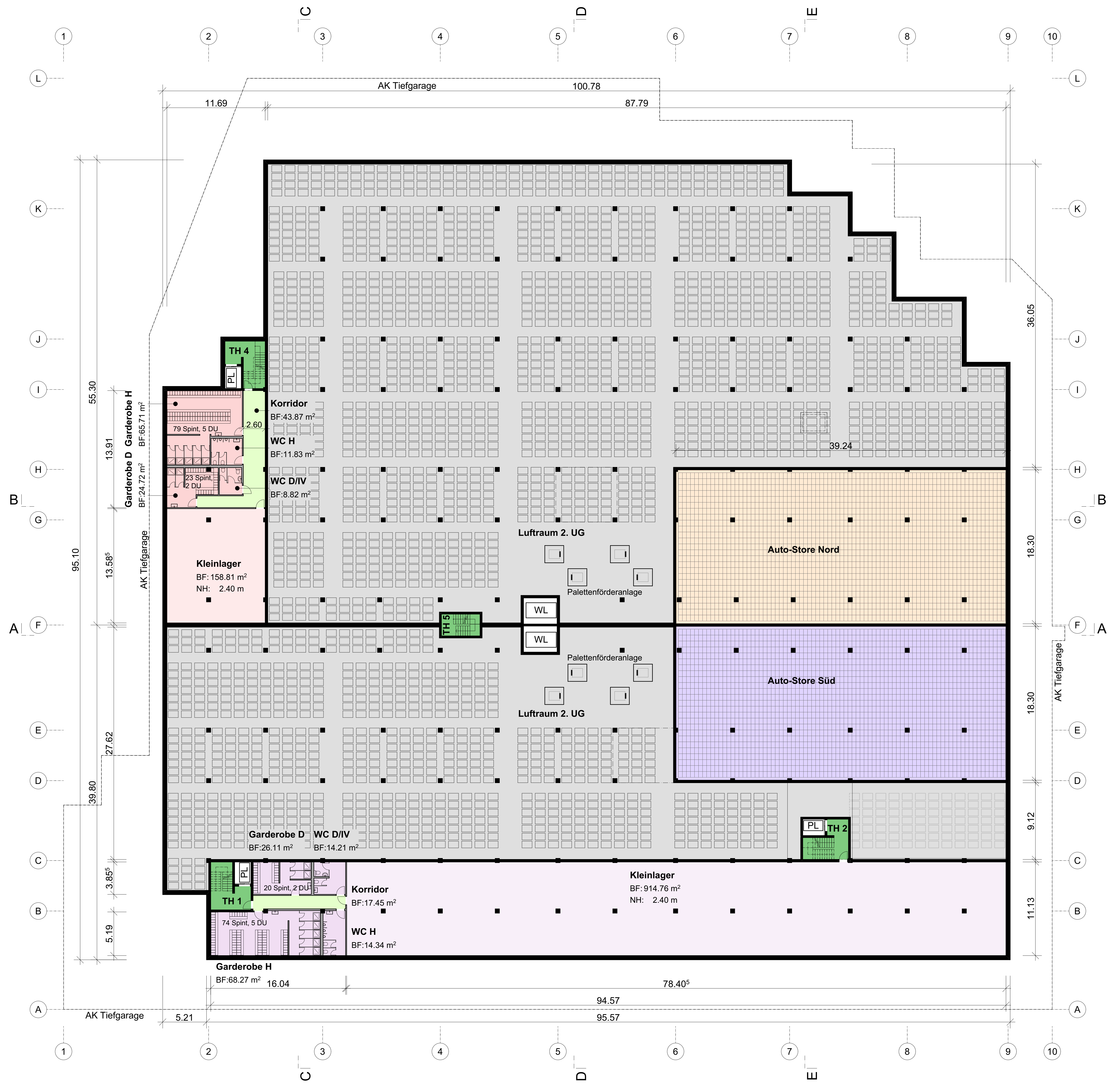
WL= Warenlift  
 1.80x3.60x2.50  
 NL: 3.2 t

	Ebene 1 -14.35m
	Ebene 2 -20.95m
	Ebene 3 (Fluchtebene) -27.55m

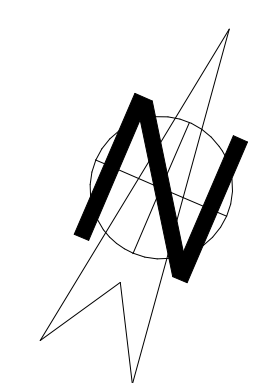




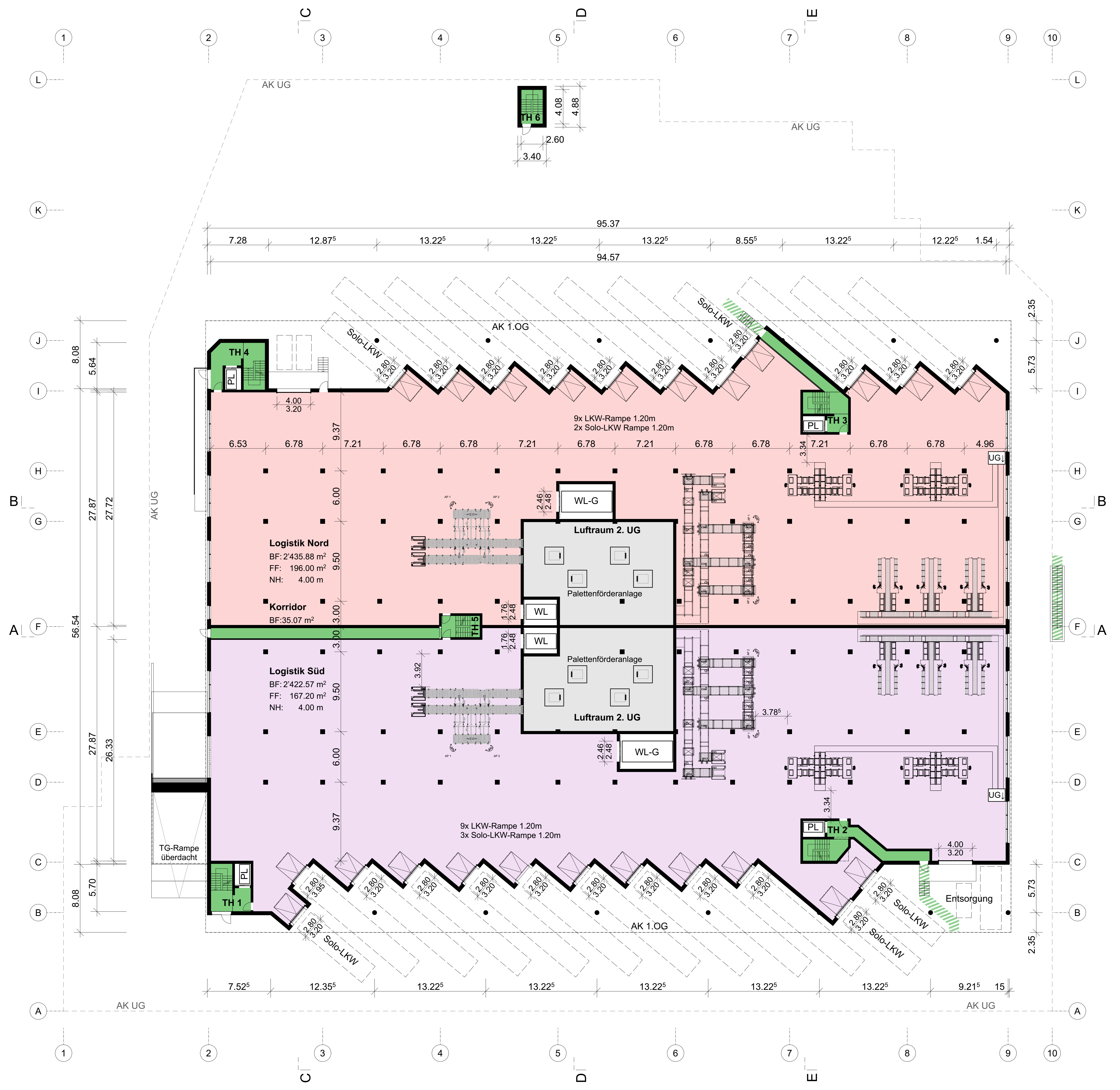
**PL=** Personellift (IV)  
 1.20x2.65x2.30  
 NL: 1'275 kg  
 17 Personen  
  
**WL=** Warenlift  
 1.80x3.60x2.50  
 NL: 3.2 t

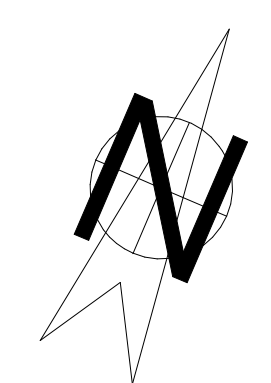




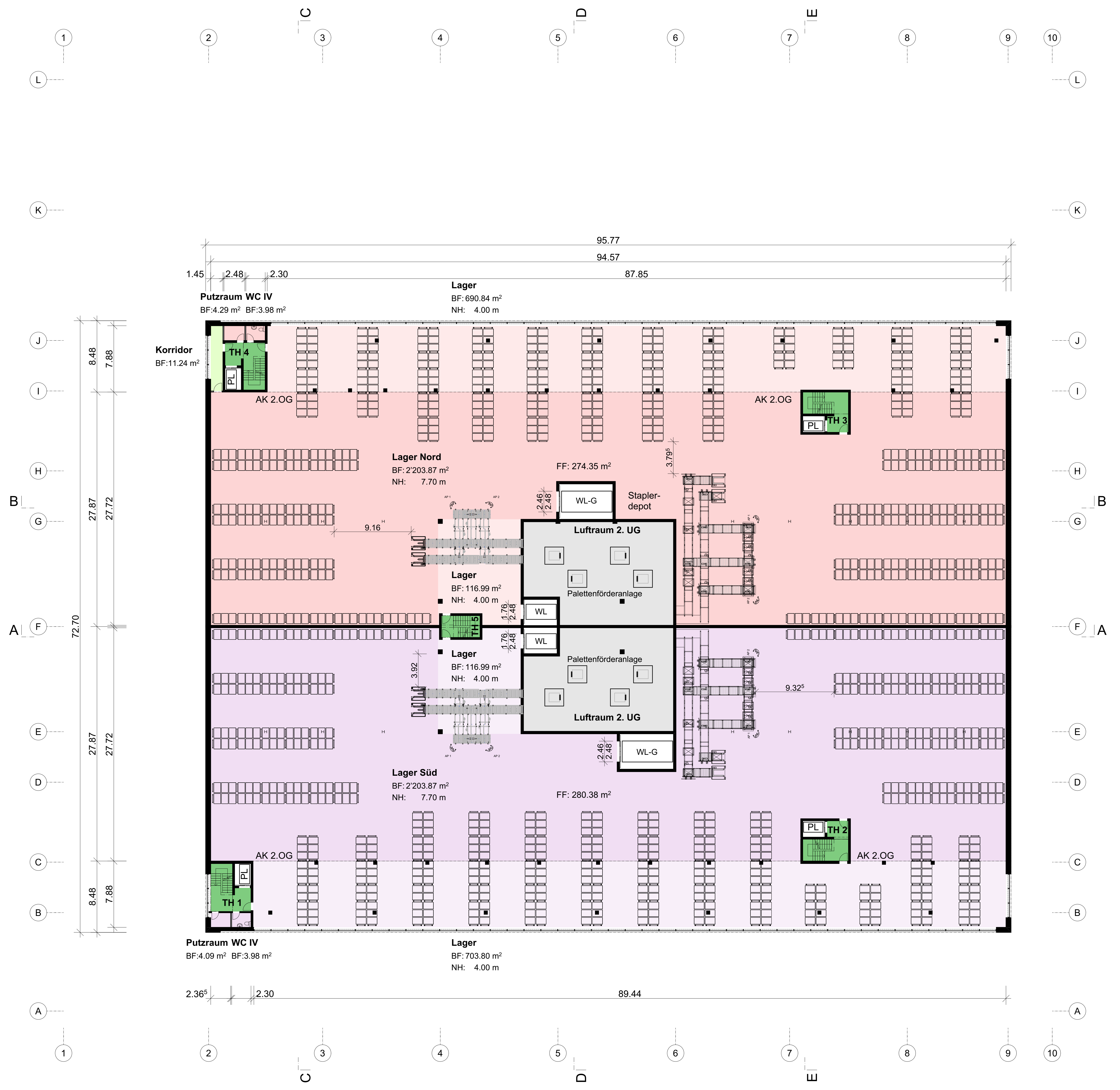


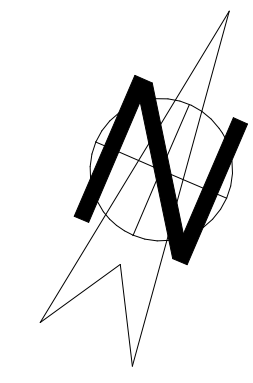
- PL= Personenlift (IV)  
 1.20x2.65x2.30  
 NL: 1'275 kg  
 17 Personen
- WL= Warenlift  
 1.80x3.60x2.50  
 NL: 3.2 t
- WL-G= Warenlift gross  
 2.50x6.00x2.50  
 NL: 6.0 t





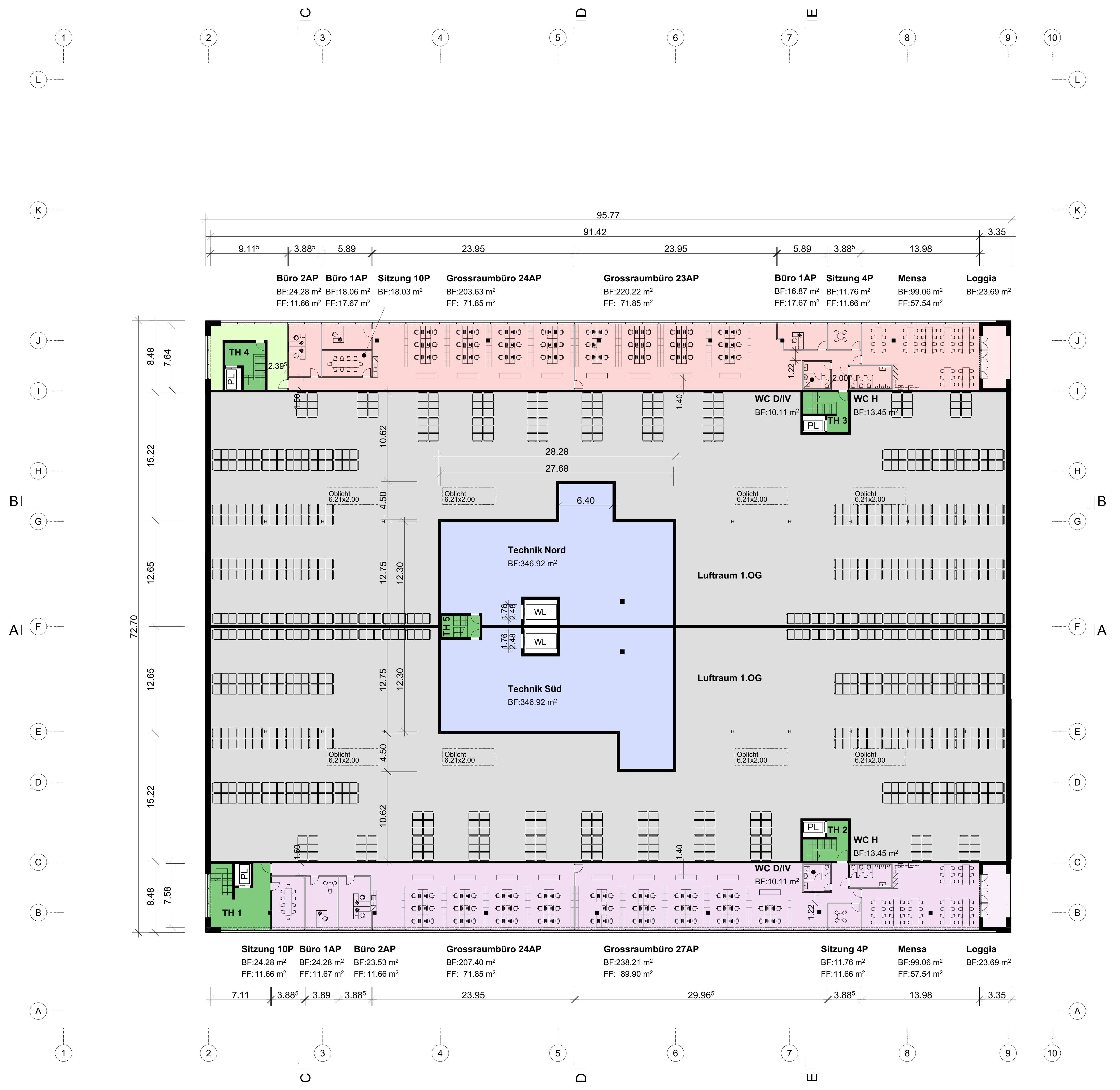
- PL= Personenlift (IV)  
 1.20x2.65x2.30  
 NL: 1'275 kg  
 17 Personen
- WL= Warenlift  
 1.80x3.60x2.50  
 NL: 3.2 t
- WL-G= Warenlift gross  
 2.50x6.00x2.50  
 NL: 6.0 t



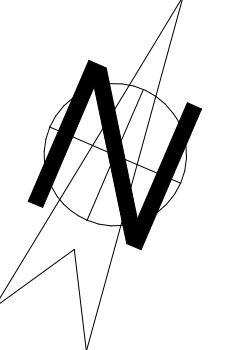


**PL=** Personenaufzug (IV)  
 1.20x2.65x2.30  
 NL: 1'275 kg  
 17 Personen

**WL=** Warenlift  
 1.80x3.60x2.50  
 NL: 3.2 t

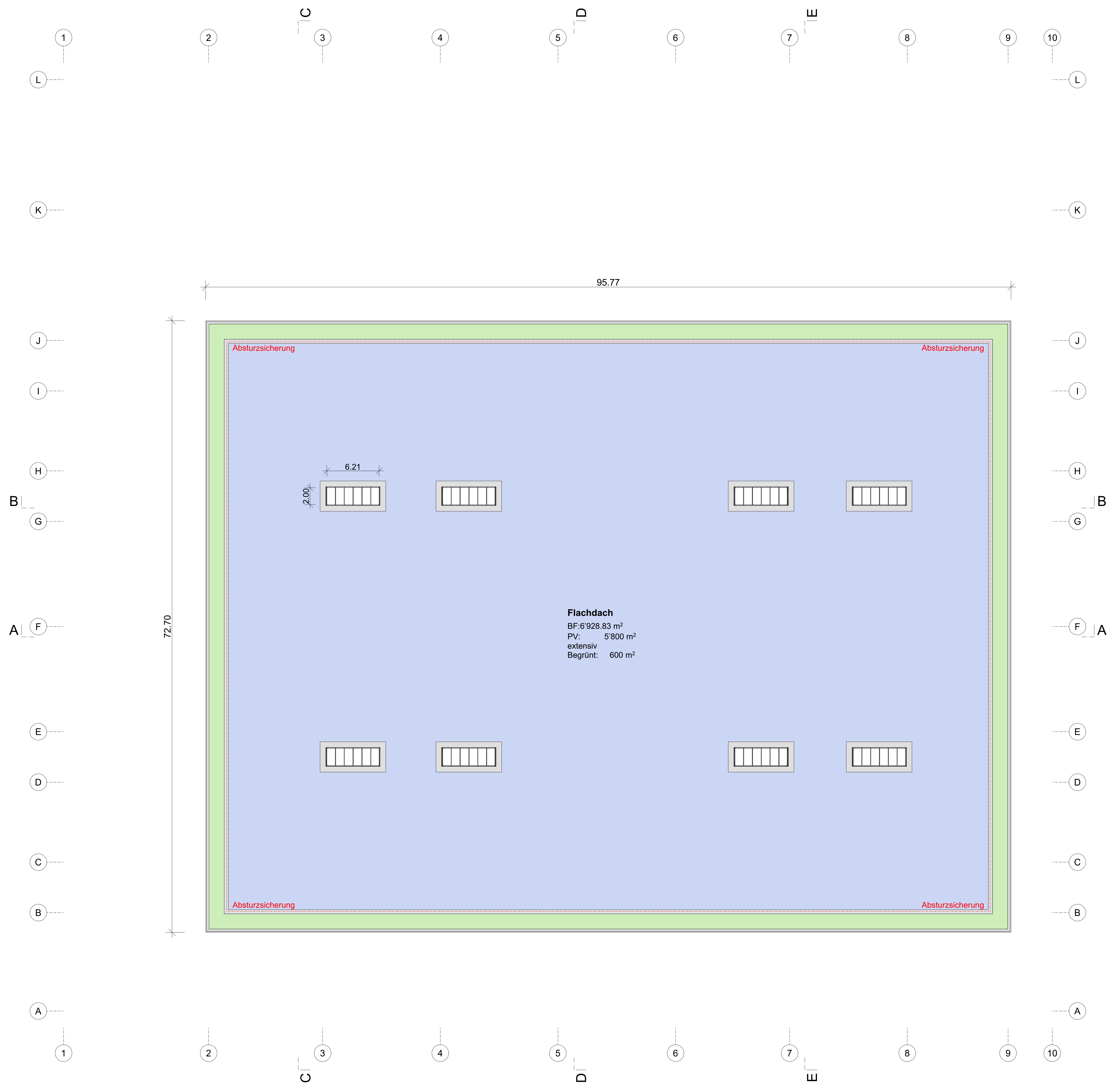


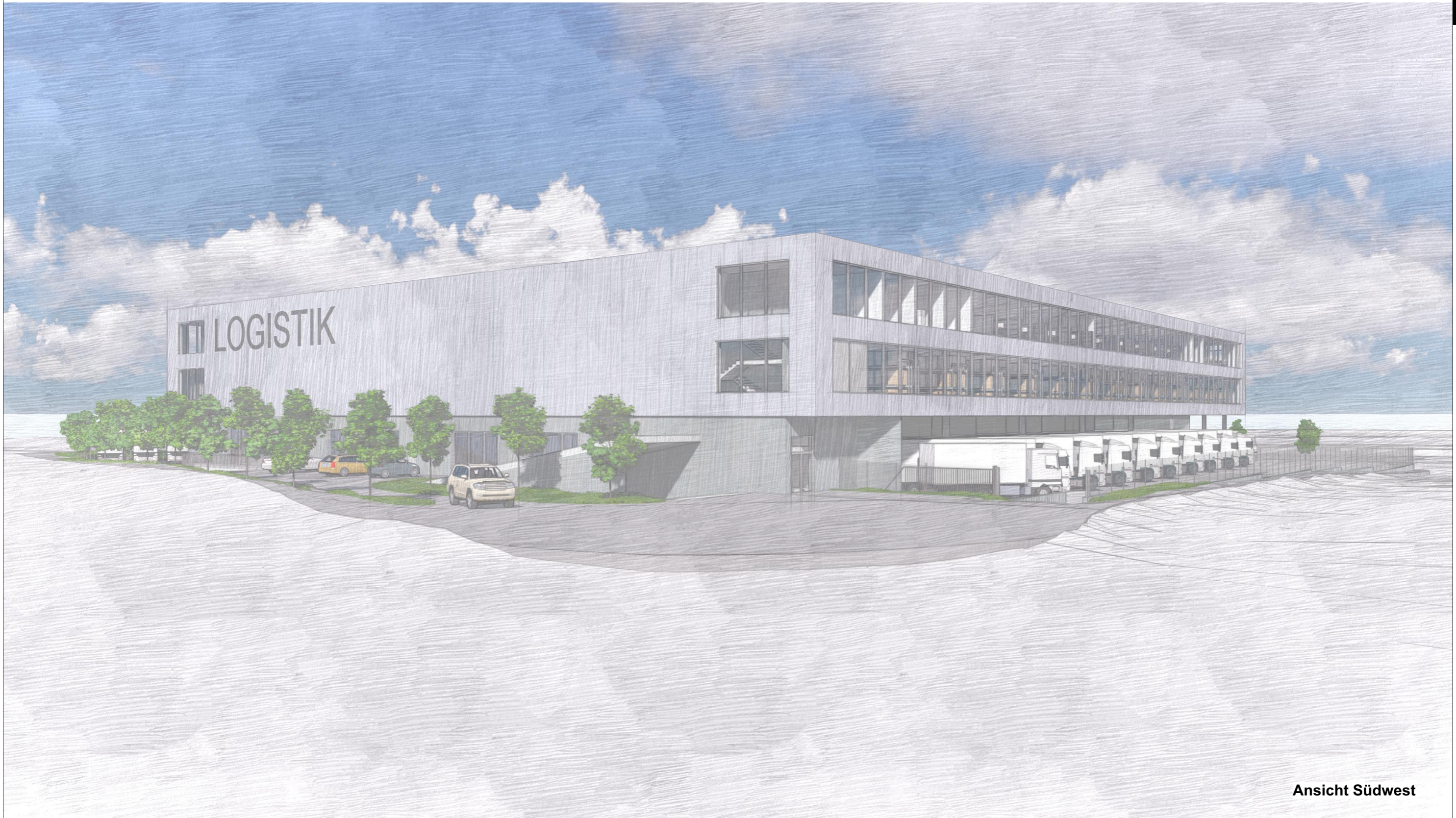




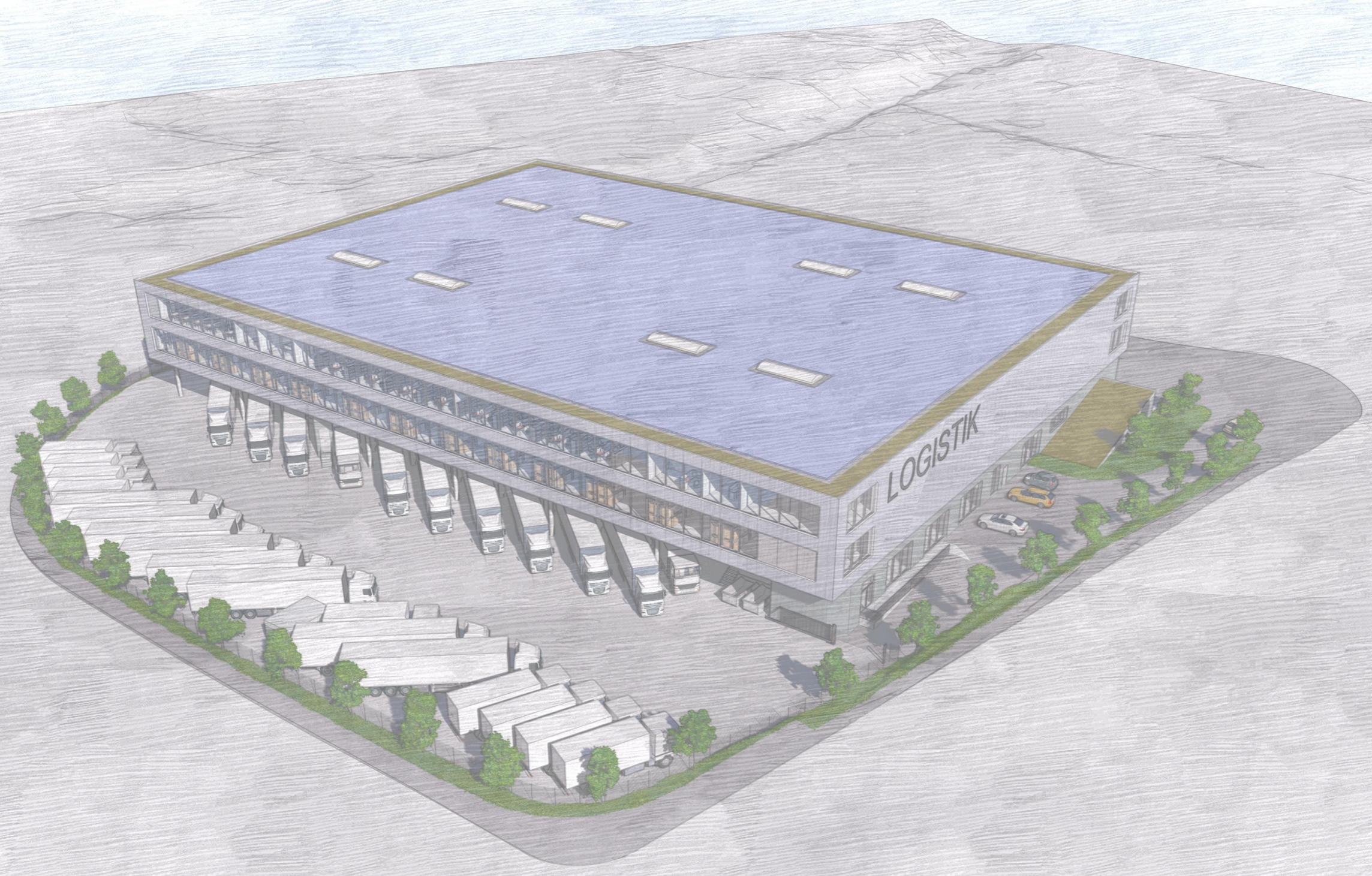
PL= Personlift (IV)  
 1.20x2.65x2.30  
 NL: 1'275 kg  
 17 Personen

WL= Warenlift  
 1.80x3.60x2.50  
 NL: 3.2 t





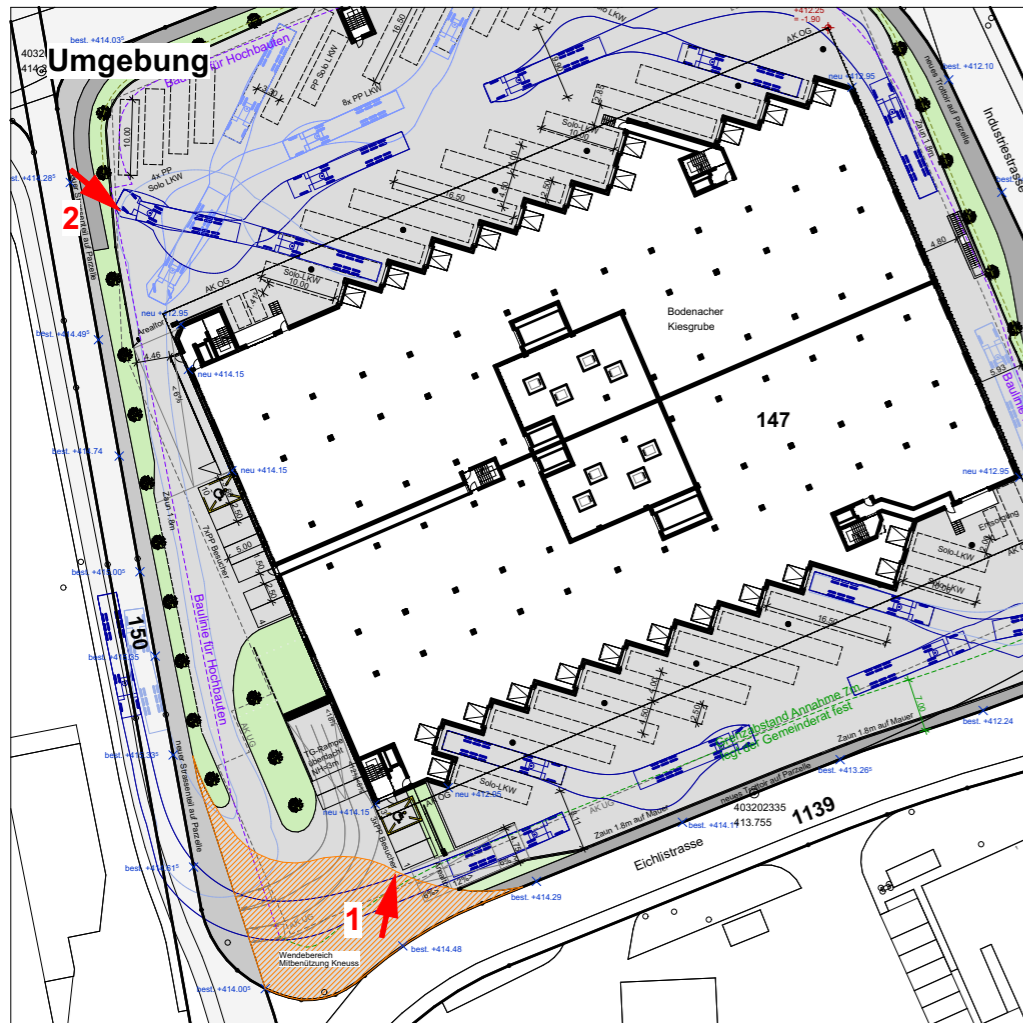
Ansicht Südwest



Ansicht Nordwest



Ansicht Ost

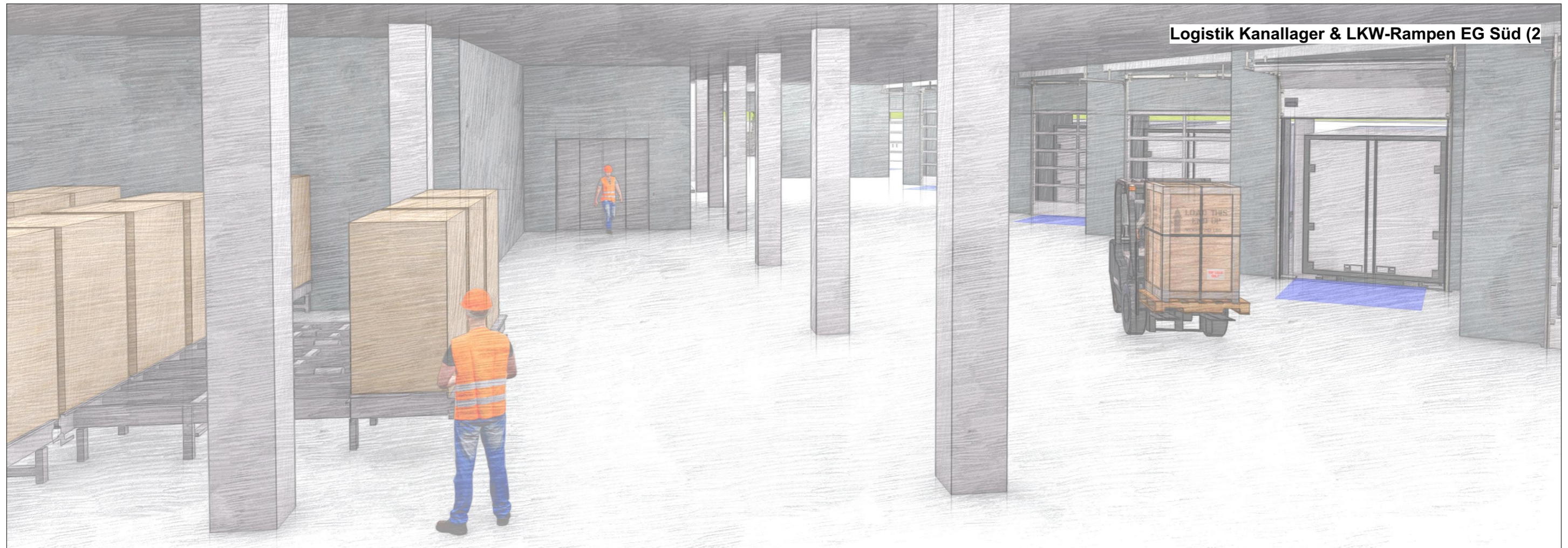
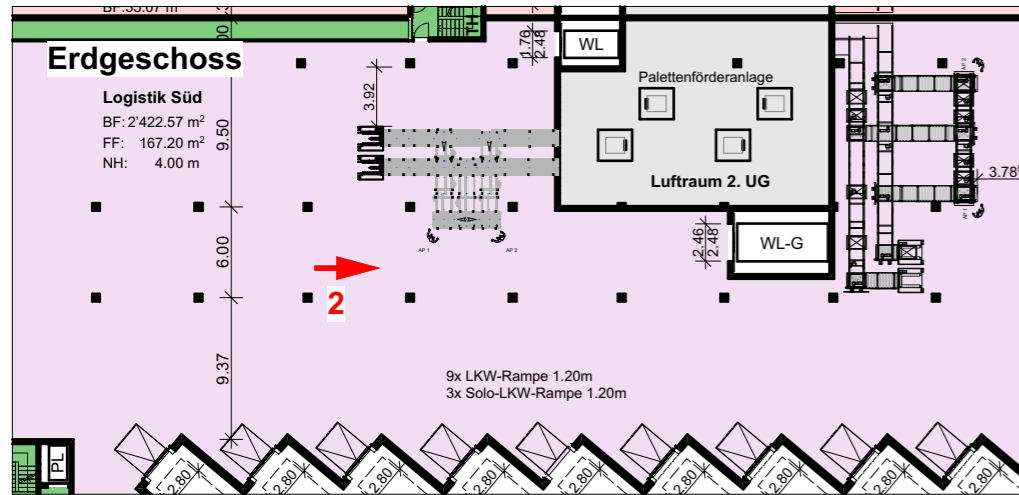
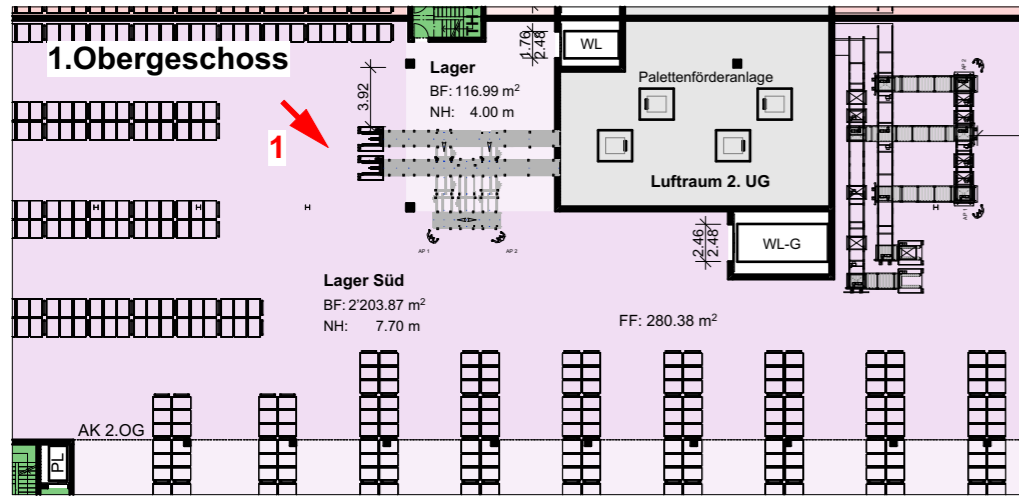


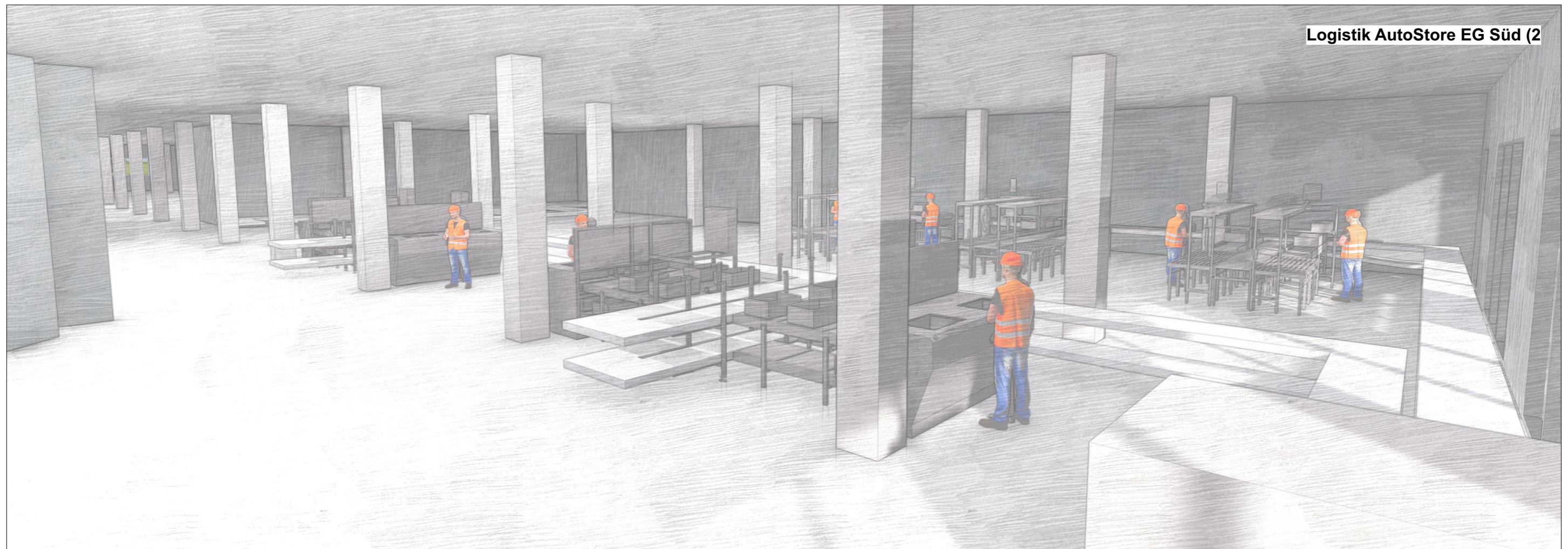
Anlieferung Süd & TG-Rampe (1)



Anlieferung, LKW-Rampen & Entsorgung Nord (2)

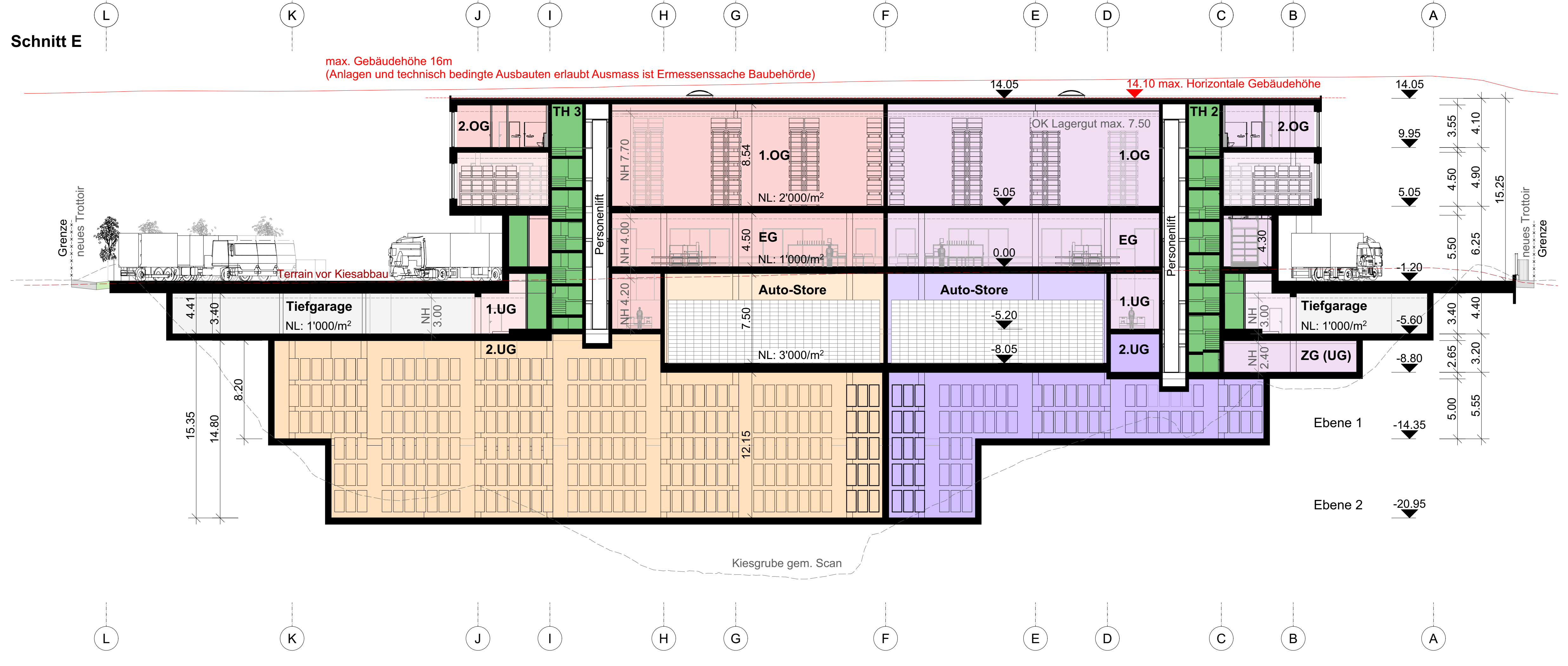
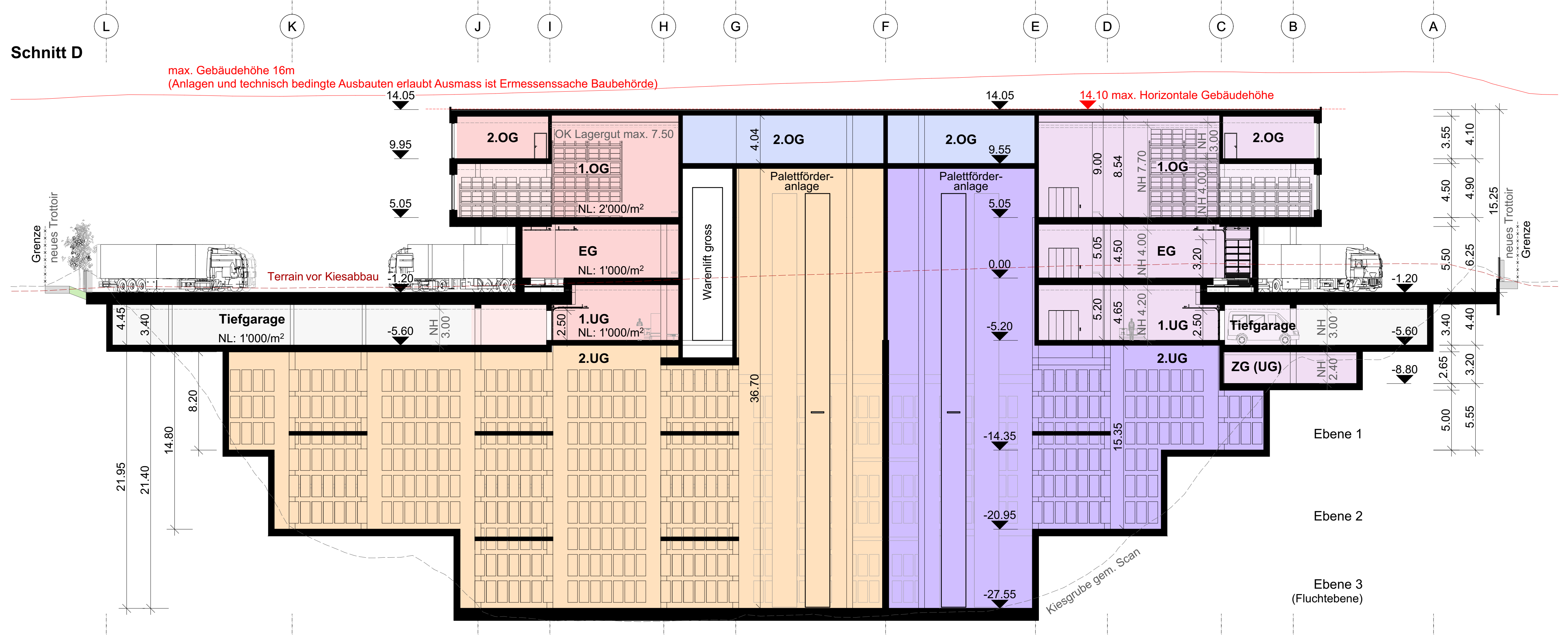
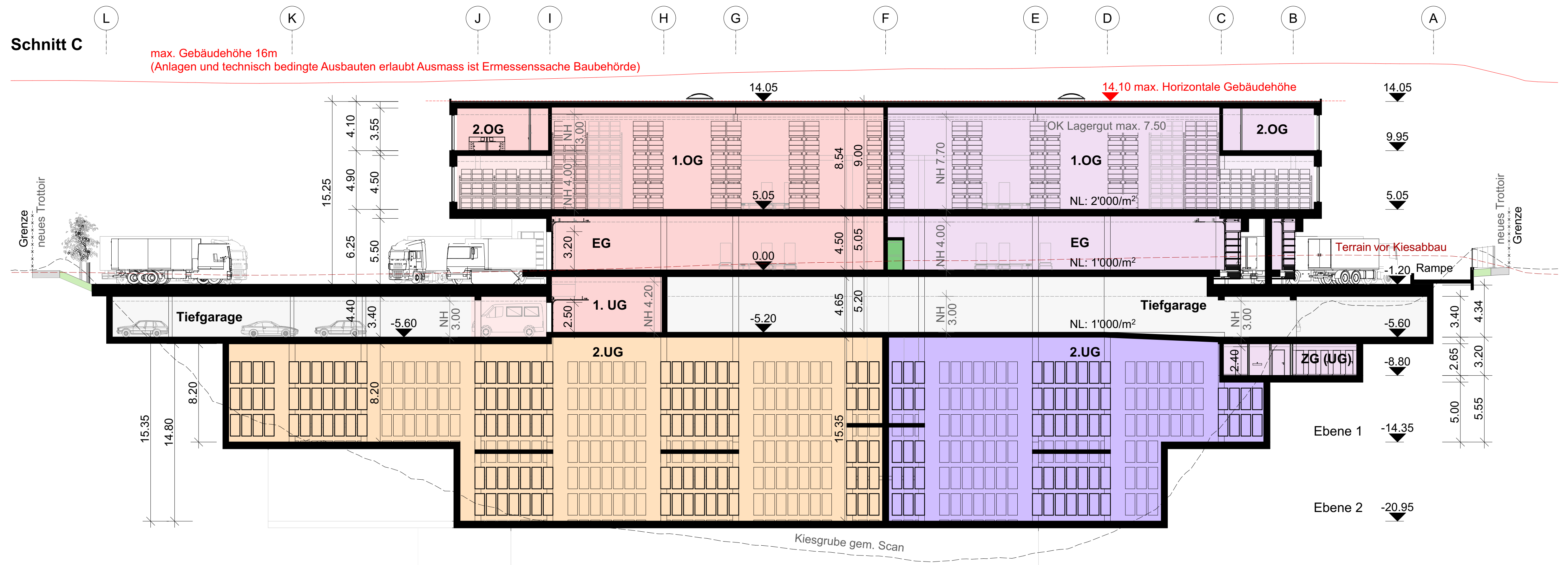














Plan-Nr. Projektion  
**X-001 3D Kanallager / AutoStore**



<b>LDH</b>	LDH Real Estate AG CH-8580 Amriswil	<b>METHABAU</b> entwickelt   plant   baut	METHABAU Plan AG CH-8580 Amriswil methabau.ch
Veranstaltung		ContractLogistics24 AG CH-8807 Freienbach contractlogistics24.com	

Projektentwicklung Phase: Studie Bau-Nr. 1000182  
LDH Mägenwil Industriestrasse, 5506 Mägenwil  
Format: A3 Datum: 21.06.2021  
Masstab: ±0.00 = 414,15 m.ü.M Gez: CGU/DIT  
Revidiert: 04.10.2024  
Sämtliche Rechte inkl. Urheberrechte an diesem Plan verbleiben bei der METHABAU Plan AG. Ohne schriftliche Zustimmung darf der Plan weder kopiert, vervielfältigt, noch Dritten übergeben oder zugänglich gemacht werden.

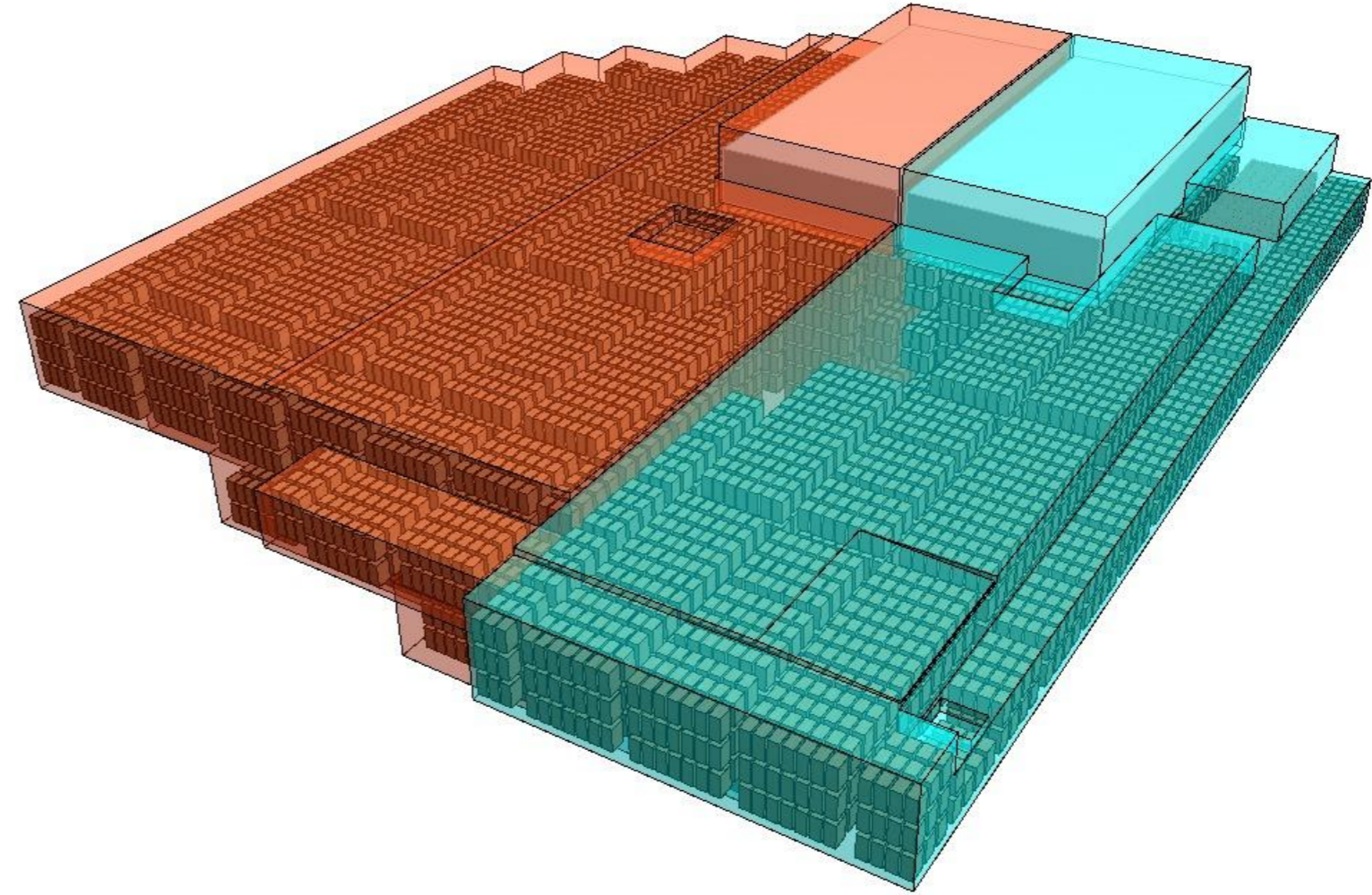
**Kanallager**

 Paletten Nord	12'500 Stk
 Paletten Süd	5'700 Stk
<b>Total</b>	<b>18'200 Stk</b>

**AutoStore**

 Behälter Nord	48'000 Stk
 Behälter Süd	48'000 Stk
<b>Total</b>	<b>96'000 Stk</b>

**Ansicht Süd**



**Ansicht Nord**

